

ALLDAY
& MILLER



Henshall Court Brindley Place, Uxbridge, UB8 2UT
£250,000

 1  1  1  B



Henshall Court Brindley Place, Uxbridge, UB8 2UT

£250,000

- Union Park Development
- Immaculately Presented Throughout
- Elizabeth Line via West Drayton Station
- Lift to all Floors
- Private Balcony
- Gated Development
- 554 sq ft
- One Bedroom
- No Upper Chain
- Allocated Parking

Description

Showcasing a stunning one bedroom third floor apartment with lift access and private balcony. Measuring 554 sq ft coming to the market with NO UPPER CHAIN.

This immaculate third floor one bedroom apartment comprises of a spacious lounge with doors onto the private balcony, modern open plan fully fitted kitchen, contemporary bathroom suite, double bedroom with ample storage and The property also comes with one allocated parking space.

1. Management charge – £5.75
2. Service charge - £143.01

Total service charge £148.76

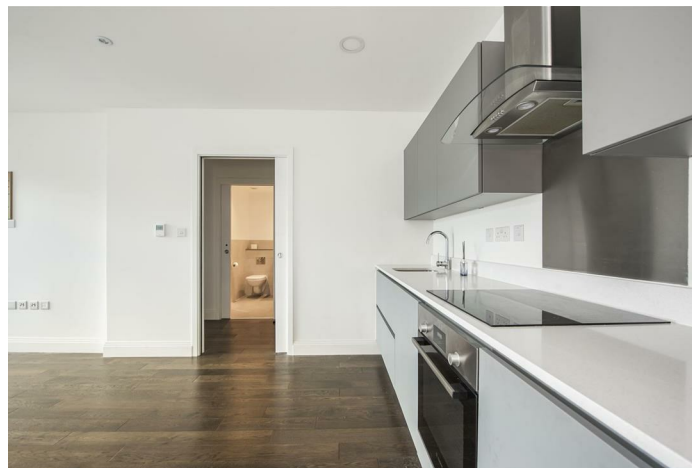
Shared ownership option.

- The sale price of the 30% share is £87,000.

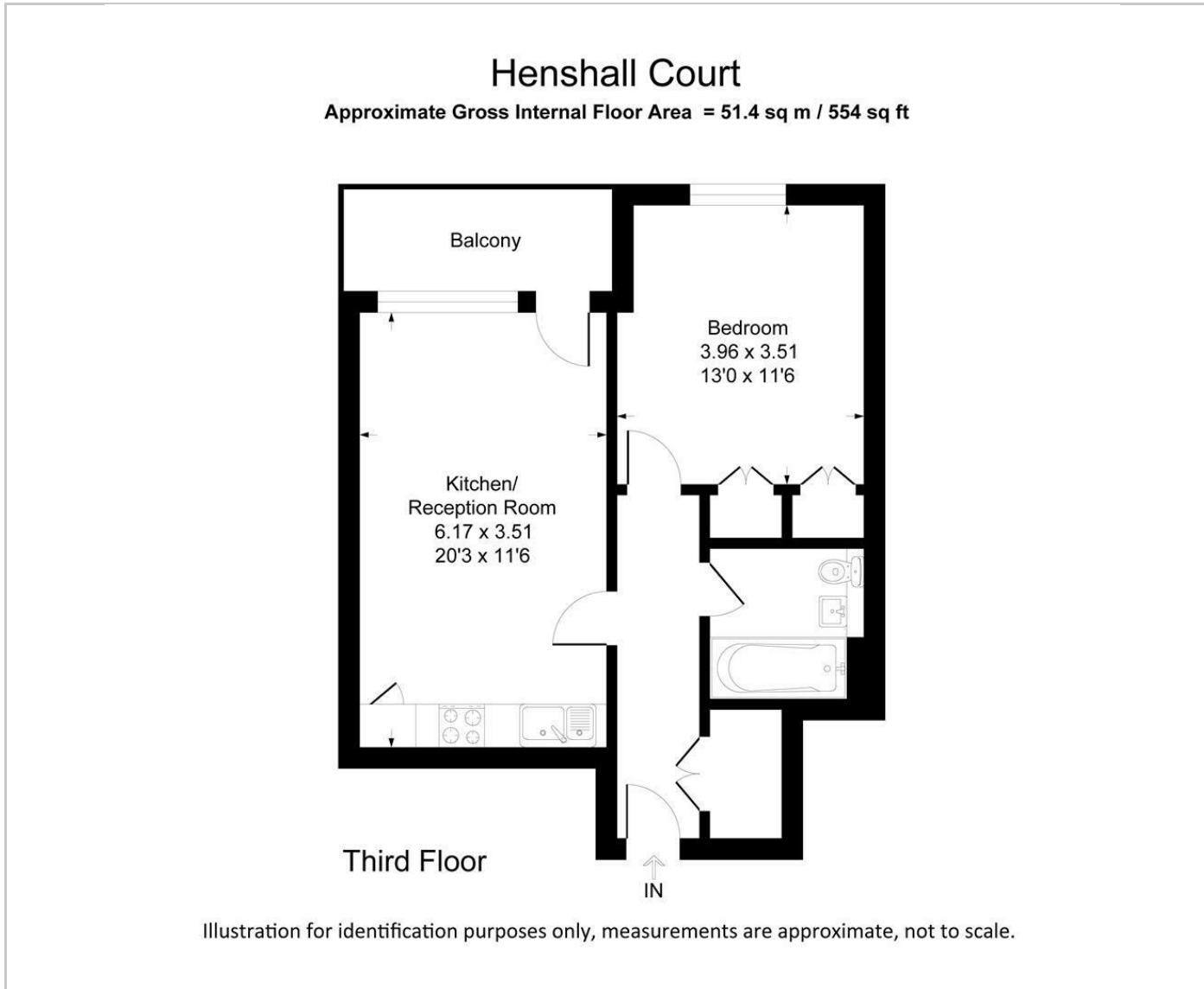
Situation

Union Park is situated close to a number of local amenities including Hillingdon Hospital, Brunel University and Stockley business park. There are a number of bus/road links close by creating easy access to Heathrow Airport, the M4 and M25. Uxbridge Underground station is just a short drive away along with its high street full of a multitude of shops, restaurant and bars. The property is also within close proximity to West Drayton High Street which has the added advantage a mainline station and Crossrail, when completed.

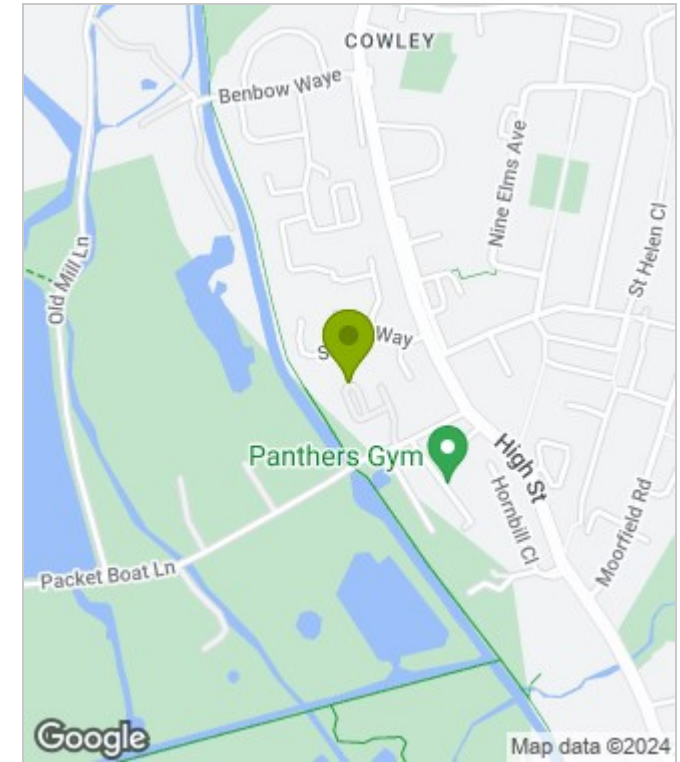
The Elizabeth Line is now operational from West Drayton Station, with express services to destinations such as Heathrow Airport (8 mins*) and Reading (34 mins*) in the West, or to London Paddington (22 mins*). When the full route opens later this year, other Central and Eastern locations will be available such as Bond Street, Canary Wharf, Liverpool Street and Essex. Uxbridge town centre is nearby with a fantastic choice of shops, bars, pubs, restaurants and Uxbridge underground station offering both Metropolitan and Piccadilly Line services.



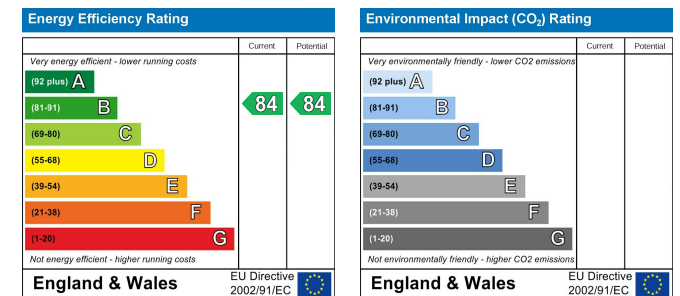
Floor Plans



Area Map



Energy Performance Graph



These particulars, whilst believed to be accurate are set out as a general outline only for guidance and do not constitute any part of an offer or contract. Intending purchasers should not rely on them as statements of representation of fact, but must satisfy themselves by inspection or otherwise as to their accuracy. No person in this firm's employment has the authority to make or give any representation or warranty in respect of the property.